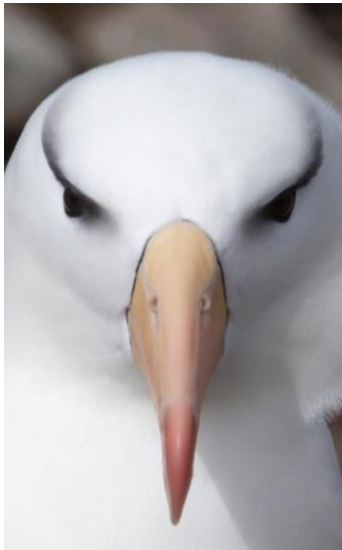


Antarctica's Mega Colonies

With Naturalist Journeys & Caligo Ventures



Dec. 31 – Jan. 17, 2020

866.900.1146

800.426.7781

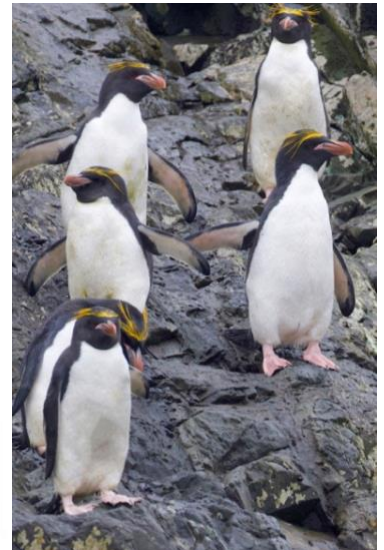
520.558.1146

naturalistjourneys@gmail.com

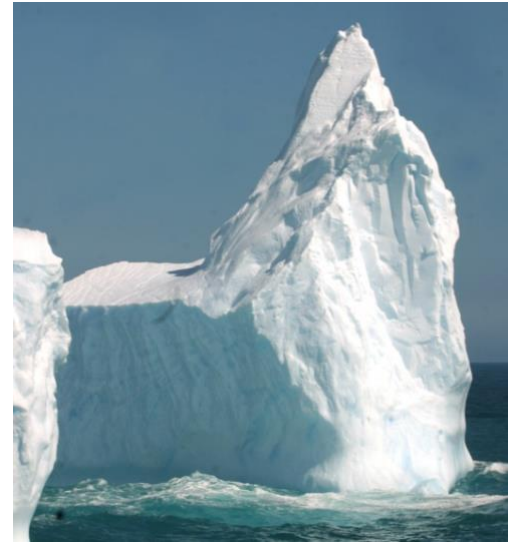
www.naturalistjourneys.com

or find us on Facebook at

Naturalist Journeys, LLC



Naturalist Journeys, LLC | Caligo Ventures PO Box 16545 Portal, AZ 85632 PH: 520.558.1146 | 800.426.7781
Fax 650.471.7667 naturalistjourneys.com | caligo.com info@caligo.com | naturalistjourneys@gmail.com



Tour Highlights

- Cruise onboard the *RCGS Resolute*, a luxury polar expedition vessel
- See an old whaling camp on South Georgia, walking in Shackleton's footsteps
- Witness some of the largest wildlife colonies on Earth, home to King, Magellanic, Adelie, Chinstrap, Gentoo, and Macaroni Penguins
- Experience outstanding wildlife observation on shore, on Zodiac excursions and from the ship
- Look for Southern Elephant, Weddell, and Leopard Seals, as well as Humpback and Minke Whales, Orca, and more
- Visit historic sites and science stations
- Learn about the environment, wildlife, history, and ecology from polar experts
- Enjoy sea kayak outings and paddle amid ice floes lit dramatically by the sun (additional cost)
- Photograph penguin rookeries backed by soaring, snow-covered peaks
- Cruise past huge icebergs in the icy Antarctic waters

Antarctica and remote islands of the South Atlantic are home to some of the largest wildlife colonies found anywhere on Earth. On the dark sand beaches and in the tussock covered dunes of South Georgia, King Penguin colonies contain more than 100,000 adult birds and their young. To the south, in the remote Weddell Sea region of Antarctica, we find Adelie Penguin rookeries of a similar size and scale. These "mega colonies" are the focus of this unique voyage.

In March 2018, scientists from Stony Brook University and their international colleagues announced the discovery of a previously unknown penguin colony, estimated to contain more than a million Adelie Penguins. Studying detailed satellite imagery of the remote Danger Islands, researchers visited and confirmed the astonishing find. These islands sit at the remote and little-visited northern tip of the Antarctic Peninsula.

While the mega fauna colonies are a highlight of this voyage, history can be found at every turn and we visit several important locations containing relics from early exploration and the whaling era. The waters are full of life and we anticipate encounters with both whales and seals. Every day we explore off the ship in Zodiacs, by sea kayak, and by hiking on shore—all in the company of expert guides who interpret and educate us about our fantastic surroundings. We invite you to join us on what promises to be a once-in-a-lifetime voyage.

Tour Summary

18-Day / 17-Night Antarctic Cruise
From \$21,195 from Santiago, departing Ushuaia
Arrival airport is Santiago International (SCL),
departing airport is Malvinas Argentinas
International (USH)



Your Day-to-Day Itinerary



Tues., Dec. 31 Santiago to Stanley

This trip commences in Santiago—Chile’s elegant capital city. We recommend you arrive in Santiago at least one day prior to the scheduled voyage departure date. This gives you a buffer in the event of any unexpected travel delays between home and trip departure time. We depart Santiago this morning on our special charter flight direct to Stanley, the small capital of the Falkland Islands. After a short 90-minute flight, we are met on arrival and transfer from the airport into town. You can’t miss the British influence, as a red phone booth stands ready for use and Guinness is on tap at the pub! Stanley is currently home to just over 2,000 residents and is reminiscent of a rural town in coastal England or Scotland. It is charming, with brightly colored houses, flower-filled gardens, a quaint cathedral, and several local pubs. The waterfront memorial, built to commemorate the lives of the servicemen lost during the Falklands War in the early 1980s, is a sobering reminder of recent history.

There is time to explore the town or enjoy a guided visit to nearby Gypsy Cove, which provides our first opportunity for observing the local wildlife, including nesting Magellanic Penguins and other sea birds. Making our way to the port, we board our expedition ship, *RCGS Resolute* in the afternoon. After settling into our cabins and exploring the ship, we meet our expedition team and fellow passengers. Excitement is in the air as we enjoy a welcome cocktail, celebrating the arrival of a new year, and cast off to explore one of the most remote regions on Earth. (D)



Wed., Jan. 1 & Thurs., Jan. 2 At Sea—Towards South Georgia Island

We chart a south-easterly course bound for South Georgia. The seabirds join us in the Southern Ocean and follow in the updrafts created by the ship. Spend time on the outer decks watching for some of the giant albatross species along with numerous species of petrels and prions as they duck and weave on the winds of the South Atlantic. Our educational presentations continue and are always popular. History is a key theme of this voyage and the epic story of Sir Ernest Shackleton and the *HMS Endurance* expedition is central to any trip to South Georgia. For the photographers among us, be sure to pick up some valuable tips from our onboard photographic guide, learning about image composition, the subtle polar light and all the basics of good camera craft. We also learn about Polar conservation—a theme particularly close to the hearts of our guides and crew.



Fri., Jan. 3 – Sun., Jan. 5 Exploration of South Georgia

South Georgia has often been called the Serengeti of the Southern Ocean—as we approach the deep bays of this rugged, rocky outcrop today, you begin to see why. This island is one of the top wildlife experiences in the world! To stand on the ship's bridge as it motors into the waters off the Salisbury Plain and view hundreds of thousands of nesting King Penguins, and a beach littered with thousands of Antarctic Fur and Southern Elephant Seals is just awe inspiring. You never forget this view.

Launching the Zodiacs, we start our exploration of the island. Large numbers of Fur Seal and the much larger Elephant Seal line the dark, volcanic sand beaches. Living beyond the tussock grass, King Penguin and their chicks number up over 100,000 in some locations, including Salisbury Plain, St. Andrews Bay, and Gold Harbour. The island is also home to large numbers of nesting albatross species and they fill the skies above, coming and going from their nests.

The scenery is spectacular and the snowy peaks of the island make us pause to consider the incredible feat of mountaineering when Shackleton and his exhausted companions traversed the island from the wild south coast in 1916. They arrived into Stromness whaling station, having crossed from King Haakon Bay, to raise the alarm that eventually led to the rescue of his men on Elephant Island in Antarctica 100 years ago.

South Georgia is also a thrilling location for the history buffs among us; rusting relics of the early whaling industry abound. We hope to observe several of the old stations at Leith, Husvik, and Stromness. A highlight is a visit to Grytviken, the largest of the whaling stations, situated at the head of Cumberland Bay. It is here that we visit the gravesite and share a toast to Sir Ernest Shackleton and his right-hand man Frank Wild. For many of us, being in the presence of this great explorer is a highlight of the trip.

There's an excellent museum at Grytviken, maintained by the South Georgia Heritage Trust, and the restored church, built by original Norwegian whalers, offers a fascinating glimpse into the past. *(B,L,D)*

Mon., Jan. 6 – Wed., Jan. 8 At Sea—Towards Antarctica

Weather and ice dictate our crossing of the Scotia Sea from South Georgia to Antarctica. Onboard experts keep us busy with fascinating presentations and lead lively discussions throughout the day. The southern tip of South



Georgia has some of the richest seabird concentrations known, and you have time to study prions, petrels, and albatross in detail as we head out to sea. With luck, we may find the world's southernmost songbird, the South Georgia Pipit, in a quiet cove. The lovely Snow Petrel vies with the Pintado for beauty in flight; both a sign we are heading south.

As we edge ever closer to the frozen continent, large icebergs announce our arrival in Antarctic waters. If conditions allow, we hope to see the dark cliffs of Elephant Island appear on the horizon. Shackleton and his men were encamped here for many months, having lost the *HMS Endurance* in the thick sea ice, far to the south in the Weddell Sea in 1915. They ate penguins, and slept on their reindeer hides, hoping a ship would pass by. When none did, and hope was almost gone, Shackleton and six companions set off from the tiny beach at Point Wild on a rescue mission to South Georgia aboard the tiny lifeboat, *James Caird*. To this day, the epic ocean crossing is considered one of the greatest sailing feats in history.

Excitement grows as the low-lying Danger Islands appear on the horizon. Situated at the extreme northern point of the Antarctic Peninsula, offshore from the larger Joinville Island, we cannot help but be excited about the days ahead. (B,L,D)

Thurs., Jan. 9 – Sat., Jan. 11 Danger Islands & The Weddell Sea

Our excursions today are dictated by the prevailing weather. Strong currents flow out of the Weddell Sea bringing variable ice conditions to the archipelago. We launch the Zodiacs to explore the waters around the island groups and plan to make shore landings at several locations. We are struck by the immense scale of the Adelie penguin rookeries here. These are the smallest (and most comical) of Antarctica's penguins, resplendent in their black and white plumage. They are fascinating to observe, coming and going from fishing forays, and sitting on the nest raising their precious chicks. Our guides are keen to share their knowledge of the penguin life-cycle and tell of the recent scientific research at this location.

We notice an increase in the huge, flat-topped tabular icebergs as we navigate into the Weddell Sea and always anticipate exciting ice navigation. This region of Antarctica is rich in history. The early Swedish explorer, Otto Nordenskjöld, and companions spent several years here in a remarkable, yet little-known tale of survival. Just over a decade later, Sir Ernest Shackleton and the survival of his crew from the Imperial Trans-Antarctic Expedition (*HMS Endurance*), 1914 – 1917, grabbed the imagination of the entire world. To this day, Shackleton's journey remains one of the great tales of polar exploration and survival.

Along with the Danger Islands, the region is home to a number of other sizable penguin rookeries at locations that include Paulet Island and Gourdin Island. Nearby Vega Island is home to some of the most fascinating paleontology found in all of Antarctica. Fossils here tell the story of Gondwanaland, of giant penguins, and other



dinosaur species and early plant life on Earth. Brown Bluff and d'Urville Monument are other landing possibilities in the area. (B,L,D)

Sun., Jan. 12 – Tues., Jan. 14 South Shetland Islands & Gerlache Strait

Approaching the South Shetland Islands as we navigate south, we may aim for a shore landing at Half Moon Island—home to a boisterous colony of nesting Chinstrap Penguin. A short hike brings us to an Elephant Seal haul out. These are fascinating animals to observe as the naturalist guides explain the unique family dynamics and behavior. There are several other nearby locations, including Yankee Harbour or Hannah Point which we may choose as alternative landing sites. A thrill for many is sailing the ship into the flooded volcanic caldera of Deception Island. At Whalers Bay, the remains of a rusting old whaling station provide a glimpse into history. There are a couple of excellent hiking routes here—one up to a high point overlooking the entire bay. Another to the far end of the black-sand beach where an old aircraft hangar can be viewed. It's from here that the very first flight in Antarctica took to the air. (B,L,D)

Places such as Cierva Cove or Mikkelson Harbour allow for some great excursions on shore and in the Zodiacs and it's a good place to look for Leopard Seals on the ice floes. The remote Spert Island provides a fascinating lesson in geology; the island group is crisscrossed by narrow channels and coves and cruising in the Zodiacs or sea kayaking here is a real thrill. Seabirds nest on the cliffs above, while seals can be found resting along the shoreline.

We enter the maze of islands and waterways along the Antarctic Peninsula and enjoying shore landings, Zodiac cruises, and kayak excursions several times each day. Cruising into the Errera Channel, we have a couple of great

landing sites to consider including Cuverville Island with its sizeable Gentoo Penguin rookery. Neko Harbour is another possibility for a landing. A very active glacier can be heard creaking and groaning, and it is common to observe large slabs of ice calving from the glacier face into the dark waters. (B,L,D)

Wed., Jan. 15 & Thurs., Jan. 16 Drake Passage—Return to South America

As we make our way back to South America, the educational presentations continue, and we enjoy an entertaining and memorable voyage recap by our Expedition Leader. Join our photography experts in the multimedia room and download and back up your precious images. If weather conditions allow, we hope to make a rounding of Cape Horn. This fabled stretch of water is home to legendary tales of exploration and early navigation. It's a fitting place to reflect on a wonderful expedition. Approaching the entrance to the Beagle Channel in early evening light, we enjoy a special dinner attended by the Captain of the ship. (B,L,D)

Fri., Jan. 17 Arrive Ushuaia—Voyage Concludes

In the early morning, we arrive into Ushuaia, Argentina. It is time to say farewell to your crew and fellow travelers. You are transported to your hotel or to the airport for return flights home. It is possible to connect to flights through to Buenos Aires or other destinations in South America. Otherwise enjoy a night in town or venture further afield to explore the highlights of Patagonia.

Please Note

Polar exploration can be unpredictable. Specific sites visited depend on prevailing weather and ice conditions at the time of sailing. The above itinerary should be read as a “guide only” and may change. The ship's Captain, in conjunction with the Expedition Leader, continually review the sailing plan throughout the voyage, making adjustments to the itinerary along the way to take advantage of optimal weather and ice conditions or to maximize our encounters with wildlife. Decades of experience spent exploring these waterways mean we have a large number of outstanding landing sites and Zodiac cruising locations to consider, even when the weather conditions may not be ideal or when heavy ice may hinder our planned route. A flexible approach is something we encourage you to bring to the ship.

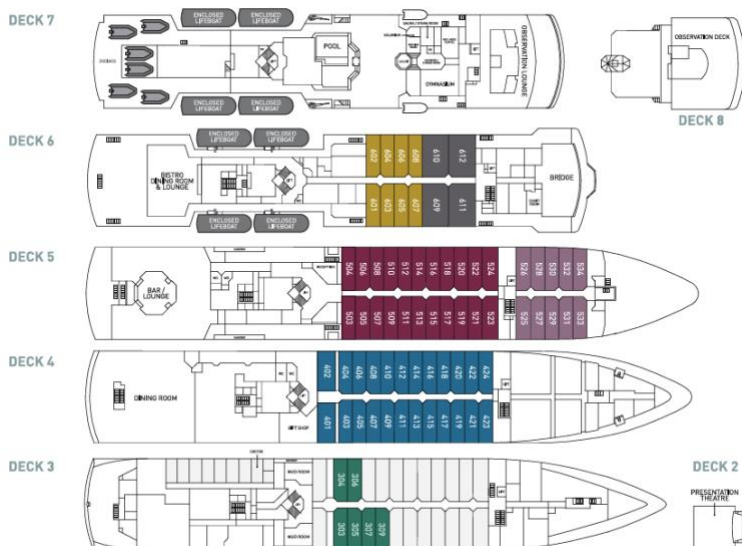
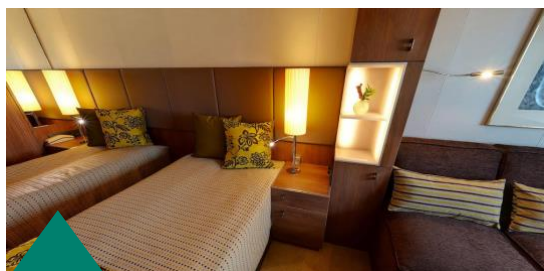
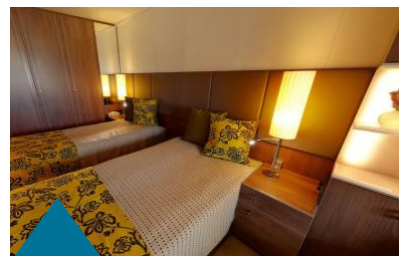
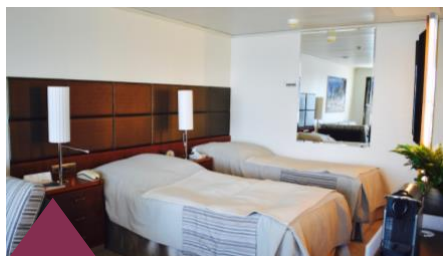
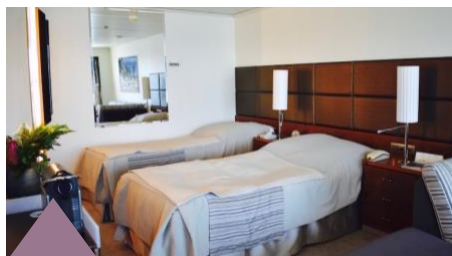
Ship Details: *RCGS Resolute*



In November 2018, a purpose built polar expedition vessel RCGS Resolute will join *Akademik Ioffe* and *Akademik*

Sergey Vavilov under our operator's banner, to offer the most capable, safe, and exclusive expedition cruise fleet in the industry.

Designed for comfort, *RCGS Resolute* is modern, well appointed, safe and ice-strengthened. From small group sessions to briefings for all passengers, we have public spaces onboard the ship ideally suited for each and every need. Two separate bar and lounge areas featuring 180 degree views and a wonderfully stocked library provides ideal places to relax or catch up on some reading. The sumptuous meals prepared for you by our culinary team are enjoyed in either of our two dining rooms, one of which features our popular bistro menu offering quick and easy meals for those prioritizing time out on deck. Both dining rooms have ample and open seating paired with modern furnishings and large picture windows with 180-degree views. Other facilities include our theatre style presentation room, gift-shop, gymnasium, wellness center, Jacuzzi, sauna and steam room, and salt water pool.



Cabin Categories

One Ocean Suite | \$29,995

The One Ocean Suites are situated on Deck 6 and offer an indulgent amount of space. Sleeping quarters feature a queen size bed with upgraded linen/pillows. Included is a comfortable sectional lounge with matching club chairs, a large desk, expansive floor to ceiling cabinetry, and spacious washroom facilities with both a shower and bathtub. A flat

screen entertainment system is also included. These suites provide easy access to the ship's bridge, the bistro, and outdoor observation spaces. The panoramic observation lounge and recreation facilities are located nearby on Deck 7.

Shackleton Suite | \$28,795

The Shackleton Suites are situated on Deck 6. Suites include the comfort of a sectional lounge, writing desk, substantial floor to ceiling cabinetry, and washroom facilities with shower. A flat screen entertainment system is also included. Sleeping quarters feature the option for either a queen or two single beds with upgraded linen/pillows. These suites provide easy access to the ship's bridge, the bistro and outdoor observation spaces. The forward panoramic observation lounge and recreation facilities are also located nearby on Deck 7.

Superior Plus Cabin | \$27,395

Superior Plus cabins are located midships on Deck 5. They are spacious and well-appointed with the option for either a queen or two single beds. A comfortable lounge is placed by the large picture window, writing desk and chair, ample floor to ceiling cabinet storage, and private washroom facilities with shower. A flat screen entertainment system is also included. Centrally located on the ship, these cabins provide easy access to the aft observation lounge featuring 180 degree views and the ship's dining areas.

Superior Cabin | \$26,995

Located forward on Deck 5 the Superior cabins have the option for either a queen or two single beds. Features include a comfortable lounge adjacent to the large picture window, writing desk and chair, ample storage, and private washroom facilities with shower. A flat screen entertainment system is also included. These cabins provide easy access to the forward stairs leading up to the bridge on Deck 6 and the forward observation lounge located on Deck 7.

Twin Private Cabin | \$25,595

Spacious and well-appointed, these cabins are situated on Deck 4 and have the option for either a queen or two single configured beds. Features include a comfortable lounge adjacent to the large picture window, writing desk and chair, ample storage, and private washroom facilities with shower. A flat screen entertainment system is also included. These cabins provide easy access to the main dining room on the ship, as well as the gift shop.

Main Triple Deck | \$21,195

These cabins are a popular choice for solo travelers willing to share, a family, or a group of friends travelling together. Located on Deck 3, cabins feature three single beds, one of which can convert to a sofa and lounge during the day. These cabins feature a writing desk and chair, ample storage, and private washroom facilities. A flat screen entertainment system is also included. These cabins provide easy access to the expedition room and gangway.

Cost of the Journey

Plan Ahead!

Protect yourself with Allianz Travel Insurance. As of January 2017, Naturalist Journeys pays 100% of your flight carbon offset.

Cost of the Journey

Pricing is by cabin, per person, based on double occupancy. Please note that many cabin levels sell quickly—this is a VERY popular cruise. Let us know your preference and we can help you choose.

| | | | | | |
|------------------------|-------------------------|----------------------|-----------------|---------------------|---------------------|
| One Ocean Suite | Shackleton Suite | Superior Plus | Superior | Twin Private | Triple Share |
| \$29,995 | \$28,795 | \$27,395 | \$26,995 | \$25,595 | \$21,195 |

The earlier you sign on, the better the selection. Some categories are limited and it is first come, first served for selection.

Tour price includes transfers to the ship in Santiago on December 31 and from the ship to either the Ushuaia airport or your Ushuaia hotel on January 17, all meals on board the ship with daily afternoon tea and 24-hour tea, coffee, hot chocolate in bar/lounge plus in cabin tea and coffee making facilities, professional guide services, port fees and permits, and miscellaneous program expenses.

A sea kayaking program is available (additional charge of US\$795pp) and must be reserved at the time of booking your voyage (there are limited spots available) and you must have some prior paddling experience.

Tour cost does not include airfare to Santiago and from Ushuaia, \$495 charter flight to Stanley, visa and passport expenses, pre- or post-cruise hotel accommodation unless noted in the itinerary, personal expenses such as laundry, telecommunication (ie. email, satellite phone), drinks from the bar, and gratuities for luggage handling or other services, baggage, cancellation or medical travel insurance related expenses (travel insurance is mandatory on all voyages), a voluntary gratuity at the end of the voyage for expedition staff and ship crew (suggested amount: \$US15 – \$20 per day).

Travel Information

Arrival airport is Santiago International (SCL), departing airport is Malvinas Argentinas International (USH). Please plan to arrive at a time convenient for you on December 30—you don't want to miss the boat! Please plan departures on January 17 beginning in the early afternoon. We highly recommend using a travel agent to book your flights. This is a remote part of the world and, from past experience, we know that it can get tricky rebooking your flight if it is cancelled or there are significant delays. Please ask and we will connect you with our agent.

Our Cruise Operator and Expedition Staff are with One Ocean Expeditions, an outstanding company with impressive experience in the region. The information provided here is given in good faith and has been compiled with all reasonable care. However, some of the information may become out of date. Please keep this in mind and check with us if you want to be sure about anything. The document was correct at time of printing, but you can check online for the most up to date version.

Photo Credits

Black-browed Albatross, Greg Smith (GS); Macaroni Penguins, GS; Gentoo Penguins, GS; Humpback Whale Fluke, GS; Elephant Seals, Peg Abbott (PA); Weddell Seal, GS; Striated Caracara, GS; Ice, GS; Snow Petrel, GS; Black-faced Ibis, GS; Guanaco, PA; Andean Condor, GS; Magellanic Woodpecker, Bud Ferguson (BF), Black-browed Albatross, GS; Striated Caracara w/ Orca Carcass, GS; Rockhopper Penguins, GS; Stanley, Naturalist Journeys Stock (NJS); Southern Elephant Seal, GS; St. Andrews Bay, NJS; Grytviken, GS; King Penguins, GS; Zodiac Ride, PA; Naturalist Journeys Group on Mainland Antarctica, BF; South Shetland Beach Walk, NJS; Antarctic Terns, GS; Shackleton's Beach on Elephant Island, PA; Penguin Welcome, NJS; Adelie Penguins, GS; Brown Skua Pair, GS; Emperor Penguin, GS; Akademik Ioffe, courtesy One Ocean Expeditions.

Naturalist Journeys, LLC is an equal opportunity service provider and committed to the goal of ensuring equal opportunity for all in employment and program delivery.