

Panama: Birding & Nature

With Naturalist Journeys & Caligo Ventures



January 16 – 24, 2021

866.900.1146

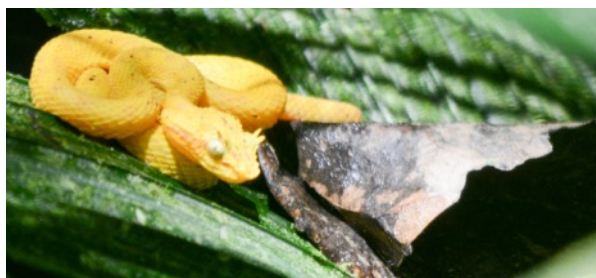
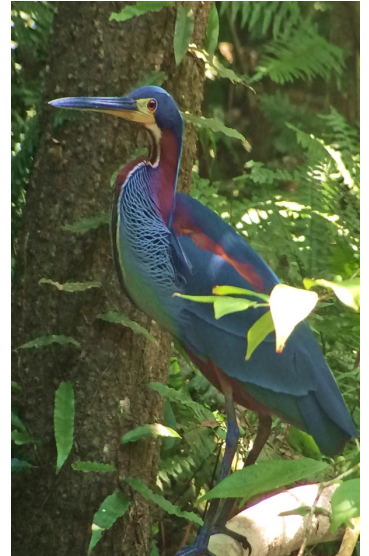
800.426.7781

520.558.1146

travel@naturalistjourneys.com

www.naturalistjourneys.com

Find us on Facebook & Instagram at
Naturalist Journeys, LLC





“We felt immersed into this land, quickly and easily. It was an adventure of the senses, all the senses, and we felt filled with Panama every day.”

— Sharon & Park Furlong

Tour Highlights

- Tally a great list of birds, butterflies, frogs, and mammals with expert guides
- Immerse yourself in wildlife—on a walk, or from your balcony or hammock ...
- See and learn about the fascinating dynamics of a Neotropical rainforest
- Cross Gatun Lake to explore the Panama Canal by boat
- Find antbirds, Pheasant Cuckoo, and other secretive species along Panama’s famous Pipeline Road
- Observe Geoffroy’s Tamarin and Mantled Howler Monkey eye-to-eye
- Bird in style from Canopy Tower’s open-air “Birdmobile”—yes!
- Venture out on a nighttime birding excursion to see Spectacled Owl, Kinkajou, large insects, and more
- Visit a colorful market for souvenirs and a conservation facility to see rare frogs
- Opt to experience the Panama Canal by boat; pass through two locks

Discover Panama’s unrivaled birding, with a rich variety of mammals, amphibians, insects, and plants, and unique habitats—from rushing mountain streams to lush lowland rainforest and Canal-side jungle—on this Naturalist Journeys Panama birding and nature tour.

Live among the birds at Canopy Tower in Soberanía National Park, a repurposed radar tower ideally situated in a pristine portion of Panama’s lush lowland rainforest. The canopy-level dining area offers views of monkeys, toucans, sloths, mixed flocks, and more, right at eye level! There is also an upper deck, where you can take your morning coffee (or afternoon cocktail), for a 360° vista of the forest and a view of the Panama Canal. Early mornings on the top deck boast great views of raptors and parrots taking flight for the day.

Then venture off to the mountains, to enjoy one of the nicest eco-lodges in the Neotropics: the Canopy Lodge. Awaken to bird calls in the cool mountain air, with wisps of cloud forest fog creeping over the property’s flowing stream. With coffee in hand, view aracarís, motmots, oropendolas, honeycreepers, and warblers at feeders before breakfast. There are trails above and below the lodge that let us explore El Valle de Antón in detail.

Tour Summary

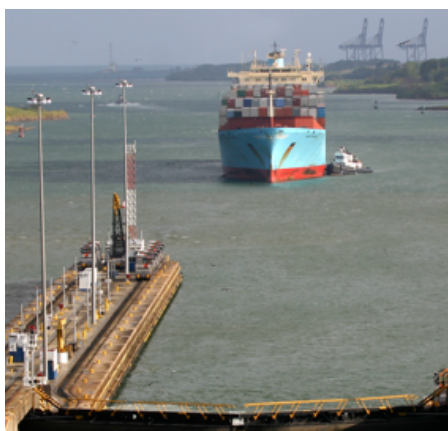
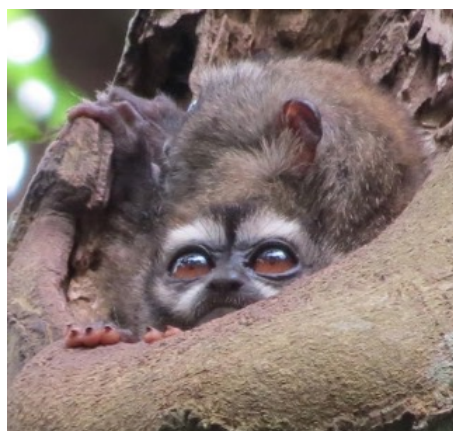
9-Day / 8-Night Panama Nature Tour w/ James Smith

\$4190, from Panama City

Airport is Tocumen International (PTY)

As a major airline hub, Panama City is easy to get to. If you wish to add on additional time to explore the city or do a Canal transit, ask our Travel Planners to help!

Itinerary



Sat., Jan. 16 Arrivals in Panama City

Welcome to Panama! Upon arrival in Panama City, take an easy hotel shuttle to the nearby Riande Aeropuerto Hotel, just five minutes from Tocumen International Airport. While you acclimatize to the tropical heat and have a cold drink, you can bird around the lovely pool or enjoy a swim. Those arriving in time can join your Naturalist Journeys tour host for dinner. We travel to the Canopy Tower tomorrow after a delicious breakfast.

Accommodations at Riande Aeropuerto Hotel (D)

Sun., Jan. 17 Travel to the Canopy Tower

After breakfast we set out for Canopy Tower. We stop on the outskirts of Panama City at the tidal flats of Panama Bay. Here we enjoy scope views of thousands of shorebirds, ibis, and most coastal waders that winter in Central America, as well as residents like Cocoi Heron, Southern Lapwing, Wood Stork, and Tricolored Heron. This is a vitally important shorebird site, and part of the Western Hemisphere Shorebird Reserve Network (WHSRN). Our route passes through modern Panama City and then parallels the Canal; watch ships pass by as we drive. Nature starts to prevail in lush forests that line the road as we turn up Semaphore Hill and the road to our lodgings at the Canopy Tower. We arrive in time for lunch.

Over the next few days, the Canal is ever present, providing a great opportunity to understand its operations (past and contemporary), recent expansion, and role in Panama's economy.

On arrival, we walk down the hill for our first bird sightings. Lush forests line the road to the Tower—we never know what we may find! Black-breasted Puffbird, Double-toothed Kite, Black-tailed or other trogons, secretive antbirds or wrens, Geoffroy's Tamarin, and more are possible. This is a leisurely walk downhill, and the lodge's open-air vehicle awaits us at the bottom to take us back to the Tower. If you wish, opt out of this first walk and simply enjoy watching hummingbirds vie for nectar at the feeders near the lodge.

We then settle into one of the most unusual eco-lodges, and before a delicious dinner we may gather on the observation deck to watch the sunset and ships passing through the Panama Canal—spectacular!

Accommodations at Canopy Tower (B,L,D)

Mon., Jan. 18 Soberanía National Park | Pipeline Road | Ammo Dump Pond

Soberanía National Park is considered one of Central America's most spectacular and accessible areas for bird watching and wildlife observation. Only 45 minutes from Panama City, Soberanía's 55,000 acres boast some 525 species of birds, 105 species of mammals (including large cats), Tamandua (a type of anteater), both Two and Three-toed Sloths, four species of monkeys, Central American Agouti, and 59 endemic plant species that inhabit four life zones. We depart early to get out on Pipeline Road when bird activity is most lively.



A walk along the world-renowned Pipeline Road is unforgettable, a prized destination among birdwatchers and nature enthusiasts. During World War II, a pipeline was built along the Panama Canal to transport fuel from one ocean to the other in the event the waterway was attacked. Fortunately, it was never used. The road, not open to traffic, provides a lush, easy pathway for us to explore. This is the site where the Audubon Society held its world record Christmas Bird Count for 19 years straight, identifying 357 species of birds in a 24 hour period. This morning we look for secretive antbirds such as White-flanked and Pygmy Antwrens, and other rainforest birds such as Great Jacamar, Broad-billed Motmot, Blue-crowned and Golden-collared Manakins, Pheasant Cuckoo, Brown Twistwing, and some of the rarer forest raptors. We likely encounter the tropical phenomenon of the mixed flock—a veritable explosion of birds that work and feed together, exhibiting complex social structure that scientists are only beginning to understand. Insect watchers may find iridescent beetles, beautiful clearwing butterflies, colorful grasshoppers, or even the world's largest damselfly.

We return to the Tower for lunch and a mid-day break, then venture out to the very productive Ammo Dump Pond, where we hope to find Northern Jacana, Rufescent Tiger-Heron, Black-bellied Whistling-Duck, Yellow-tailed Oriole, Lesser Kiskadee, possibly Pygmy Kingfisher, and other interesting species.

Accommodations at Canopy Tower (B,L,D)

Tues., Jan. 19

Panama Canal Rainforest Boat Adventure | Gamboa History | Summit Ponds

This morning you can sleep in a bit ... if you are able to over the sounds of the forest just outside your door! Others may want to watch the sunrise with a good cup of Panamanian coffee from the observation deck.

After breakfast, we explore the waters of the Panama Canal on small boats, quietly moving through coves and inlets in search of wildlife, including Greater Ani, Snail Kite, other raptors, and possibly whistling-ducks, reptiles such as Spectacled Caiman and Green Iguana, and both Mantled Howler and White-faced Capuchin Monkeys. We find this to be the most comfortable and accessible way to discover the natural attributes of the Panama Canal watershed. We have the freedom to explore Gatun Lake in detail, passing by gigantic cargo ships transiting the waterway. Along the way, we should spot Three-toed Sloth resting on tree branches, while Osprey are vocal and on the prowl for Peacock Bass. Limpkin, Anhinga, and Keel-billed Toucan are some of the birds we may encounter.

This is also a great place to focus on some history. At the time of its creation, Gatun Lake was the largest man-



made lake in the world. The flow of all the rivers within the Panama Canal Watershed is contained in Gatun Lake to provide water for the operation of the lock system. More than 52-million gallons of fresh water are used for every ship that transits through the Panama Canal from one ocean to another.

In 1902 (33 years after the Suez Canal was opened), after years of negotiation and a disastrous attempt by the French to build the canal, the U.S. Congress authorized construction of the Panama Canal. The project was put on hold, however, when Colombia, which controlled Panama at the time, rejected the authorizing treaty. It was only in 1904, after Panama's independence, that construction began. Ten years later, ahead of time and under budget, the Canal was opened to bridge the world. Imagine that first historic passage!

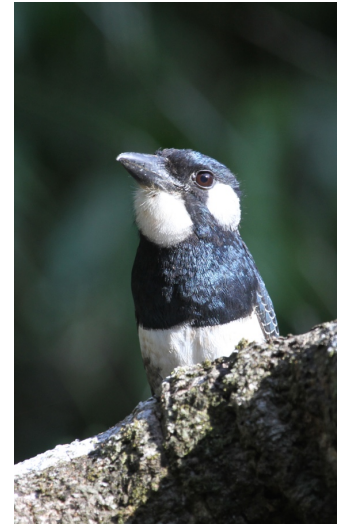
The year 2000 marked the end of the U.S. treaty (which had actually been revised several times) and Panama now assumes responsibility for operation of the Canal. In 2016, a third lock opened to accommodate increased traffic and larger ships. From our boats on Gatun Lake you can see the Titan Crane and learn more about the history of the town of Gamboa, which is still the Canal's dredging operations center.

Mid-afternoon we visit Summit Ponds, a wonderful, leisurely birding area where even in the quiet time of afternoon we may find trogons, motmots, and a host of interesting species. Here, we are at the edge of open and forested areas, and good numbers of migrant warblers join resident Neotropical species, making it a very rewarding stop. The ponds themselves often provide us with nesting Boat-billed Heron, a nocturnal species that can be otherwise difficult to find.

We return to enjoy happy hour, dinner, and evening at the Tower.
Accommodations at Canopy Tower (B,L,D)

Wed., Jan. 20 Discovery Tower | Pipeline Road

Today we return to nearby Pipeline Road, but this time we go very early to ascend the Discovery Tower for a special sunrise-viewing of birds high in the canopy. The views are incredible, and of note are parrots, raptors, and other species flying by as they leave their night roosts. Hummingbirds are busy in the canopy flowers, and we may find elusive puffbirds, woodpeckers, tanagers, and, with luck, the dazzling Blue Cotinga.



We come back to the Discovery Center display area for coffee and a chance to watch the hummingbird feeders. One year we found Night Monkeys peering out of their roost tree here, such a delight! We can walk another trail or part of the road after our coffee; the Pipeline area is so rich that there are always new species to observe. Black-tailed Trogon can be seen here, as well as the secretive Streak-chested Antpitta, Black-faced Antthrush, noisy Bright-rumped Attila, Red-capped Manakin, and Northern Schiffornis. We don't want to miss any of them!

We return for lunch and a siesta, then in the afternoon we do some leisurely birding along the Chagres River and in the residential area of Gamboa, below Gamboa Rainforest Lodge, where lush plantings attract many species, from toucans to agoutis to colorful tanagers and more. Golden-fronted Greenlet, Cinnamon Becard, Golden-collared Manakin, Buff-breasted Wren, and Gray-headed Tanager are all possible in this area.

One of our evenings at the Tower we enjoy an outdoor barbecue and a night drive on which we look for Spectacled Owl and mammals like Allen's Olingo, Woolly Opossum, and Kinkajou, which are often feeding on fruits and flowers. It's a lot of fun to be under the immense canopy of rainforest trees as the night shift of wildlife gets active. Our skilled Tower guides are specialists in finding these mysterious jungle residents!

This is our last evening at the Tower and we gather on the observation deck for sunset and the sight of birds returning to roosts ahead of dinner.

Accommodations at the Canopy Tower (B,L,D)

Thurs., Jan. 21 Plantation Road | Canopy Lodge

This morning we enjoy an early walk on Plantation Road in a bit more open forest than we experienced on Pipeline Road. This is another good area to encounter mammals and we often find confiding trogons and motmots here, too, as well as some mixed flocks. Orange-billed Sparrow inhabit this more open forest floor, as do Scaly-throated Leaf Tosser, Song Wren, Chestnut-backed Antbird, and many flycatchers.

Plantation Road is close to our lodge, so those who prefer a leisurely morning can stay back and relax. By mid-morning we pack up and drive north to the other fabulous property operated by the Canopy Family—the Canopy Lodge near El Valle in the central mountains.

On arrival at Canopy Lodge, we find ourselves immersed in the beauty of mountain terrain where nature is active all around us. We quickly find a host of hummingbirds, tanagers, and oropendolas at feeders adjacent to the open-air dining area. We have close up views of tanagers: Flame-rumped, Crimson-backed, White-lined, and Blue-gray, as well as electric Red-legged Honeycreeper. Clay-colored Thrush, Streaked Saltator, and Yellow-faced Grassquit provide us with activity throughout our stay. Sometimes more secretive species such as Rufous Motmot or Orange-billed Sparrow emerge from the vegetation near the lodge!



We meet our local guides who are eager to share bird specialties on the forest trails leading from the Lodge. Occasionally, two often-difficult to see Neotropical species can be found here: Tody Motmot and Rufous-vented Ground-Cuckoo. Basilisk Lizard sun themselves on rocks along the stream, while Broad-billed and Rufous Motmots, Chestnut-backed Antbird, and the less common Dull-mantled Antbird are often present along the trail, and occasionally, we see the bizarre White-tipped Sicklebill. This area is good for seeing Neotropical wintering migrants, such as Prothonotary and Canada Warblers. We hope in time to get views of the elusive Sunbittern that feeds along the stream that flows by the Lodge, too.

We relax and settle in. The food here is wonderful, as is the atmosphere for tonight's meal. Enjoy!
Accommodations at the Canopy Lodge (B,L,D)

Fri., Jan. 22 Cara Iguana | Rare Frog Conservation Facility | Canopy Lodge

There are so many wonderful places to bird right near the Canopy Lodge. Today we choose according to what species the guides are finding, and where. The secretive Tody Motmot is one option, often found on a road we like to walk along above a lovely residential district near town.

We do want to visit a facility for endangered frog research and propagation, housed at El Nispero, a small zoo in El Valle with a wide selection of native animals and birds, mostly in good-sized cages. Some of you may already be familiar with the frog facility as it has been featured in a documentary on Public Television. In addition to learning about the many forms of frogs and the challenges they face, we spend some time birding here, too. The grounds are landscaped with artificial streams and the backdrop is the most dramatic of El Valle's hills. It's a pleasant place to spend an hour wandering around. The secretive Rosy Thrush-Tanager is one bird we look for here, a lovely songster with black and raspberry-colored plumage! We also take time to visit the charming local farmers' market in El Valle where colorful vegetables and artisan crafts are found. This is a great chance to purchase any local souvenirs or gifts to take home.

Accommodations at Canopy Lodge (B,L,D)

Sat., Jan. 23 Exploring the Mountains at La Mesa & Las Minas Road

This morning we venture to higher elevation to watch birds near what might be the world's most beautiful chicken farm. Walking into the forest, we have a chance to see some of the more secretive species, including mixed flocks of antwrens, Black-crowned Antpitta, and another chance for White-tipped Sicklebill.

Our plan is to walk atop La Mesa on Las Minas Road where we search for foothill species and hope to see one of our favorites: the comical Northern Emerald-Toucanet. In lush clusters of bromeliads that festoon the trees, we encounter Ochraceous Wren and Gray-breasted Wood-Wren; on tree trunks we search for both Plain-brown and Spotted Woodcreepers, and we listen for Red-faced Spinetail, which may sing out from roadside trees. Both White-throated and Pale-vented Thrushes can be found along our route, as well as mixed groups of beautiful



tanagers like Silver-throated. Masked Tityra often call from treetops at the road's edge and Black-headed Saltator, Tawny-capped and White-vented Euphonias, and Spot-crowned Barbet have been seen at local feeders! Those who prefer hiking to birding can simply walk farther along this scenic mountain road, returning to join us at a specified time.

We return to the lodge for lunch and a break. Relax on your porch, browse books in the open-air library, or wander the grounds where Stripe-throated Hermit, and Violet-headed and Rufous-tailed Hummingbirds visit purple verbena flowers. You may even glimpse the rare Rufous-crested Coquette! We may hear the beautiful cascading notes of an Orange-billed Nightingale-Thrush or watch a mixed flock come through, perhaps with a beautiful Bay-headed Tanager. Along a stream that runs through the property we watch for Green Kingfisher, possible Sunbittern, Buff-rumped Warbler, and a host of colorful butterflies, including the brilliant Blue Morpho. A Three-toed Sloth may be seen draped lazily across an open branch or peeking out from behind the large leaves of a Cecropia tree.

On our last afternoon, we take a leisurely walk up the road or on trails right from the lodge. Our local guides know where to find the best and most current sightings. Trees surrounding the lodge serve as perches for a good diversity of flycatchers, including Southern Beardless-Tyrannulet, Lesser and Yellow-bellied Elaenias, and Boat-billed, Social, and Piratic Flycatchers. During the dry season, raucous Chestnut-headed Oropendola nest in a colony in the tall Eucalyptus trees in the yard, while Giant Cowbird sometime show up looking for an unguarded nest in which to deposit an egg.

Birding along the road near the lodge, we have a good chance of hearing and seeing many species typical of the dry Pacific slope: Blue-crowned Motmot, Lance-tailed Manakin (difficult to see), Rosy Thrush-Tanager, and Red-throated Ant-Tanager. Humid foothill species are also present, including Orange-billed Nightingale-Thrush, and Dusky-faced and Tawny-crested Tanagers. Watch for larger species like the noisy Gray-headed Chachalaca, Keel-billed Toucan, Collared Aracari, and Black-chested Jay. It is also worthwhile to keep an eye on the sky, in case a White Hawk or Black Hawk-Eagle passes overhead.

This evening we have a wrap-up over happy hour to list our trip highlights, tally the species we've seen, and enjoy a celebratory dinner at the lodge.

Accommodations at Canopy Lodge (B,L,D)



Sun., Jan. 24 Departures from Panama City

We enjoy one last morning with nature as our alarm clock before heading off to the airport. **Important!** We have a three-hour return trip to the airport, so we ask that you book flights out after NOON. Those electing to leave earlier need to pay for a special transfer, with your start time set so that you have at least two hours at the airport. If you just can't bear to leave yet, you can book additional days here and enjoy a field trip up to Altos Las Marias by 4WD, or simply relax.

Guide James P. Smith



James brings some twenty five years of guiding experience to Naturalist Journeys. Originally from Sheffield in the United Kingdom, he discovered a love for guiding in Israel in 1995 where he helped establish the Kibbutz Lotan Center for Birdwatching in the Southern Arava Valley. Since then, he's led hundreds of tours throughout the Northern Hemisphere for a number of UK-based tour companies. His trips to Israel and North America are especially close to his heart but he's also led or co-led tours to Mexico (Veracruz), The Gambia, Kenya, Iceland, Scottish Highlands, Spanish Pyrenees, Central/Southern France, Greece (Lesvos), and India (Goa). An accomplished illustrator, James placed runner-up in the British Birds "Bird Illustrator of the Year" competition in 1992 and went on to have his work published in numerous birding magazines and journals. He also co-authored the

two volume set *A Guide to the Birding Hotspots of Israel* (Published in 2000 by the Israel Ornithological Center and the S.P.N.I.). He returns to Israel every year to lead trips and remains an active member of the Israel Rarities and Distribution Committee. When not leading tours he can be found at home in Western Massachusetts with his wife Susannah and their young son Matan.

Itinerary

Plan Ahead!

Protect yourself with [Allianz Travel Insurance](#). As of January 2017, Naturalist Journeys pays 100% of your flight carbon offset.

Travel Information

Please plan to arrive on January 16 to check into the Riande, get settled, take a short walk, and enjoy dinner. If you must arrive later, plan on meeting the group the morning of January 17 at the Riande for breakfast. We then travel to the Canopy Tower for a morning walk before lunch. Plan to depart after NOON on January 24. It is a three-hour plus drive down from the Lodge, so if you MUST leave earlier it is possible, but not enjoyable, and we'd need to charge you for an independent transfer.

If you are arriving early or staying longer to see other parts of Panama or to transit the Canal, we can help with your hotel and transit arrangements and other activities such as a guided city tour if you wish.

Cost of the Journey

The cost of this journey is \$4190 DBL / \$3890 SGL per person, from Panama City. Single is based on using shared bath facilities at the Canopy Tower. Discounted lodging is subject to availability—please ask for details. A limited private bath single throughout is available, too; cost is \$4940. Tour cost is based on double occupancy and includes all accommodations; meals as specified in the itinerary, group airport transfers, professional guide services, local park and other area entrance fees, and miscellaneous program expenses. The cost is based on a minimum number of 6 participants. A limited number of upgrades to suite accommodations are also available.

The cost does not include transportation to or from your home to Panama, or items of a personal nature such as laundry, telephone charges, portage, maid gratuities, or beverages from the bar.

If you wish to transit the Canal, we can recommend arrangements. We can make suggestions for activities and lodgings. There are cruises on most days of the week.

Photo Credits:

White Hawk, Rich Wagner | WildNaturePhotos; Agami Heron, Lori Conrad; Collared Aracari, James Adams; Three-toed Sloth, Peg Abbott (PA); Eyelash Viper, Sandy Sorkin (SS); Golden-hooded Tanager, PA; Geoffroy's Tamarin, Howard Topoff (HT); Capybara, PA; Blue Morpho, Robert Gallardo; Canopy Walkway, PA; Tanagers and Elaenia at Canopy Lodge Feeders, Naturalist Journeys Stock (NJS); Night Monkeys, Narca Moore-Craig (NMC); Panama Canal, Howard Topoff; Black-throated Trogon, NJS; Geoffroy's Tamarin, HT; Canopy Tower, Janice Petko (JP); Group Birding, PA; Orchid, NMC; Black-bellied Whistling-Ducks, PA; Snail Kite, PA; Keel-billed Toucan, Doug Greenberg; Boat-billed Herons, Tom Dove (TD); Red-capped Manakin, Bob Behrstock; Orange-collared Manakin, Bud Ferguson; Black-breasted Puffbird, PA; Canopy Lodge, JP; Northern Emerald-Toucanet, SS; Masked Tityra, PA; Sunbittern, SS; Tody Motmot, PA; Three-toed Sloth, Leon Moore; Blue-crowned Motmot, PA; Gray-headed Chachalaca, Greg Smith.

Naturalist Journeys, LLC is an equal opportunity service provider and committed to the goal of ensuring equal opportunity for all in employment and program delivery.